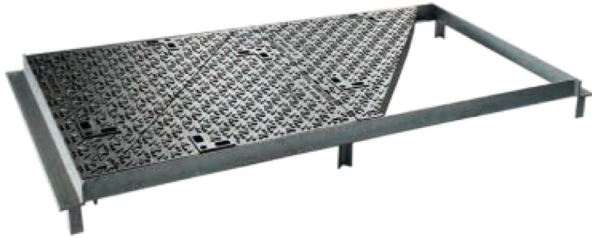



## STANDARD MANHOLE COVER KT CLASS C250



### SPECIFICATIONS :

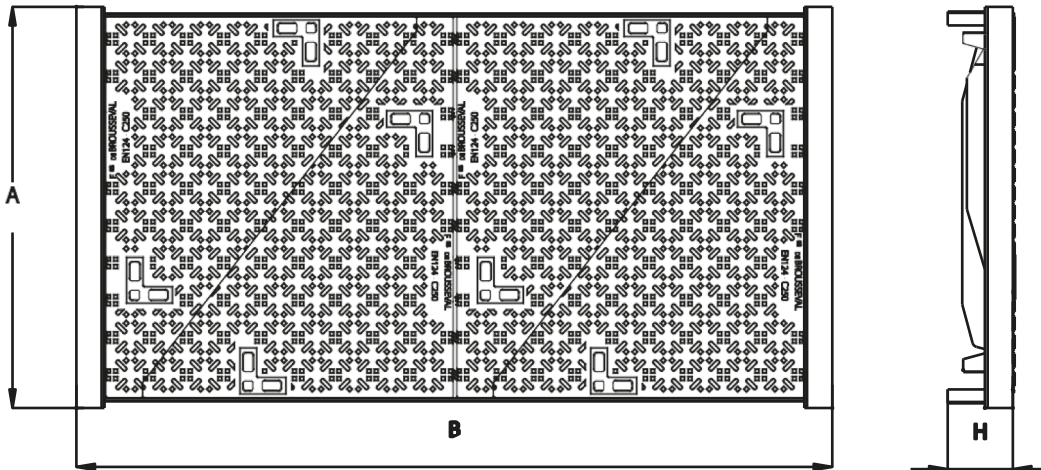
Norm: **EN 124-2**  
Loading : **250 kN**  
Quality Label : Tüv 

### MATERIAL & COATING :

**Cover** : Spheroidal Cast Iron  
EN-GJS-500-7. Water Based Black Paint  
**Frame** : Steel Hot-Dip Galvanized

### OPTIONS :

Fall safety equipment  
Custom Badging & Logo



Ref.	Description	Lay-out	Clear opening	A*	B*	H*	Total weight
				mm			Kg
10562	K1T		750 x 750	850	870	140	100
10158	K2T		750 x 1500	850	1620	140	190
19145	K3T		750 x 2250	850	2370	140	280
Weight / Lid (Kg)							42

\*External frame measures.