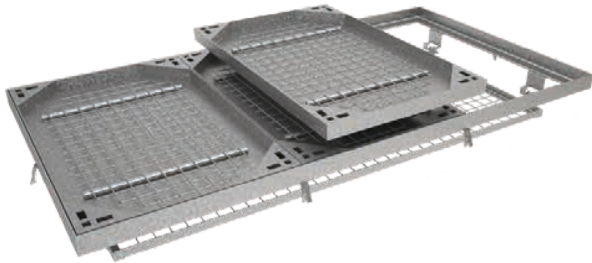


RECESSED INFILL MANHOLE COVER PTR CLASS C250 WITH FALL SAFETY MESH GRID



SIGNIFICATIONS :

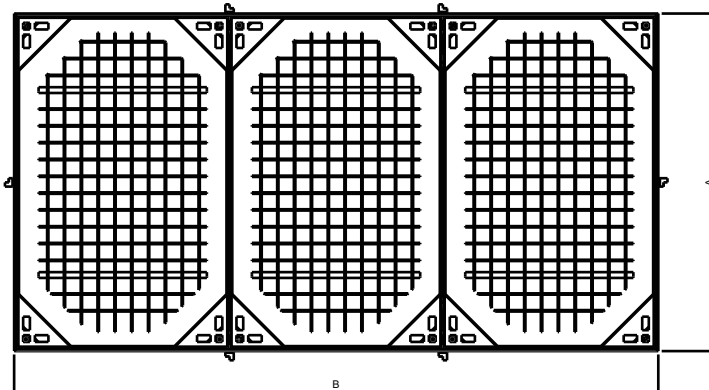
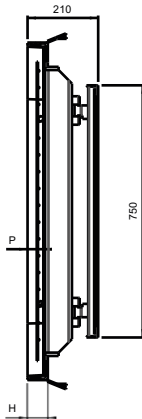
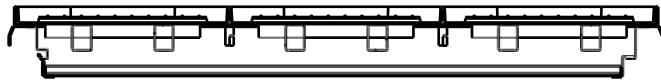
Norm : **EN 124**
 Loading : **250 kN**
 Layer height : **48 mm**
 Fall safety mesh grid of 50 x 50 mm
 Quality Label : Tuv 

MATERIAL & COATING :

Cover & Frame : Steel Hot-Dip Galvanized
Mesh grid : Steel Hot-Dip Galvanized

REMARKS :

Delivered without concrete



Ref.	Description	Lay-out	Clear opening	A*	B*	H*	P	Total weight
				mm				Kg
/	1/2 P2TRG		884 x 527	1004	647	60	48	94
/	P2TRG		1161 x 884	1004	1281	60	48	141
26672	L5TRG		1795 x 884	1004	1915	60	48	212
/	L6TRG		2429 x 884	1004	2549	60	48	274
/	M2TRG		3062 x 884	1004	3182	60	48	343
Weight / Lid (Kg)								53

*External frame measures

All dimensions, weights and norms are given for information only. BERGTEC reserves the right to modify the specifications of products given in the present document.