

1/2

## MANHOLE COVER - LOCKED HINGED LIFT ASSISTED ARES 750 CLASS D400



### PLACE OF INSTALLATION :

**Slow Traffic:** Products suitable for hard shoulders, parking areas

### SPECIFICATIONS :

According to methodological reference of **EN 124-2**

Loading : **400 kN**

Quality label : Tüv



### MATERIAL & COATING :

**Cover :** Spheroidal Cast iron EN-GJS-500-7.  
Water Based Black Paint

**Frame :** Steel Hot-Dip Galvanized

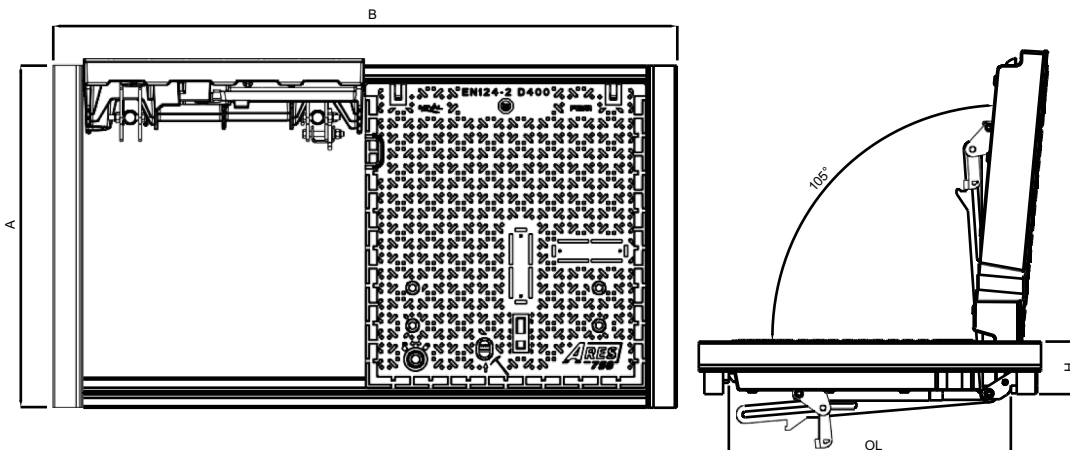
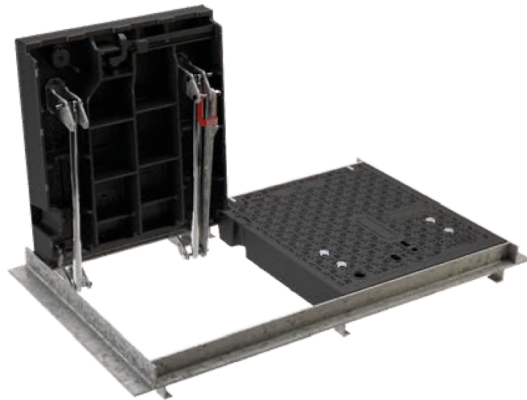
**Hardware :** Stainless Steel / Cast Iron





### OPTIONS :

- Custom Badging & Logo
- Special lock : burglar-proof SAE
- Standard lock : 1/4 turn

### REMARK :

- Lift assisted by stainless steel mechanical springs.
- Selflocking by means of ductile iron spring bar «Pushed - Slammed».
- Safety blocking to prevent accidental cover closure, activated automatically at the opening of the cover.
- Handling : Opening and handling of the cover without specific tools.



Ref.	Description	Lay-out	Clear opening	A*	B*	H*	Total weight
							Kg
				mm			
40836	ARES-1		750 x 750	912	912	140	180
40840	ARES-2		750 x 1500	912	1661	140	341
/	ARES-3		750 x 2250	974	2411	140	515
/	ARES-4		750 x 3000	974	3161	140	680

\*External frame measures

All dimensions, weights and norms are given for information only. BERGTEC reserves the right to modify the specifications of products given in the present document.

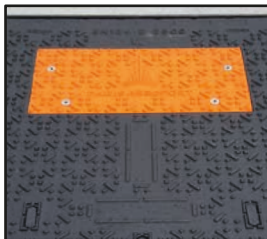
2/2

## MANHOLE COVER - LOCKED HINGED LIFT ASSISTED ARES 750 CLASS D400



### CABLE-PASS

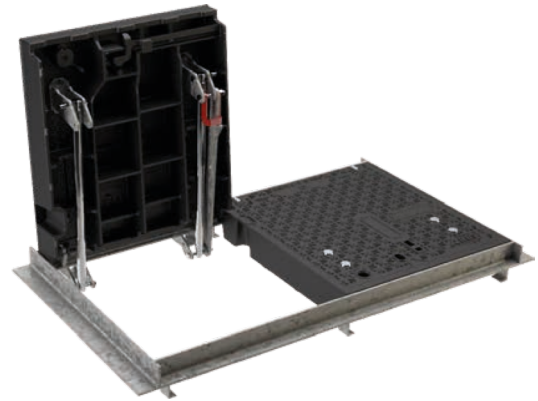
2 dedicated  **cable-pass**  areas are pre-equipped on the ARES cover and can be quickly opened (**breakable plates in cast iron**).



### IDENTIFICATION FINITION & CUSTOMIZATION

#### On request :

- 1 badging area for customization of 450 x 250 mm by **casting on the cover** or with an insert plate made of powder-coated cast iron (color of your choice).
- 2 badging areas are available for customization of 180 x 40 mm with **stainless steel plates**.



### SAFETY BLOCKING DEVICE



At the opening, **safety blocking device** (gravity pawl) automatically locks the cover and prevents the cover from being accidentally closed.

A locking pin in option adds an **extra level of safety**.



Easy closing & **effortless** by only rising the device.

**Selflocking** by means of ductile iron spring bar «Pushed - Slammed»

## Associated products

