



BERGTEC
INTERNATIONAL

TITAN RANGE

TITAN 1000 & 1200



TITAN


1000 & 1200



DESCRIPTION

Designed to cover underground structures with a side of 1m (TITAN 1000) or 1,20m (TITAN 1200), the TITAN range completes our range of access covers and is available in several lengths.

MAIN FEATURES

- Access cover locked, hinged and lift assisted made in Spheroidal Cast Iron EN-GJS 500-7, finished by Polyester coating environmentally friendly.
- Frame : Steel Hot-Dip Galvanized, thickness $\mu 80$ according to ISO 1461.
- Norm : EN 124-2
- Quality Label : TÜV 
- Loading :
 - TITAN 1000 : D400 to E600 – road tested.
 - TITAN 1200 : 400kN – road tested.
- Place of installation: Slow Traffic (standard) or High Traffic.

TITAN

1000 & 1200



MAIN FEATURES

- Lift assistance : Steel Gas Struts, Stainless Steel Gas Struts or Stainless Steel Mechanical Springs.
- Lock : Burglar-proof, automatic lock « Pushed & Slammed ».
- Gasket : EPDM Moulded Monobloc, hardness > 75 Shore A.
- Security : non-return device activated automatically at the opening.
- Accessories : Cast Iron / Stainless Steel.

TITAN

1000 & 1200



DESIGN

Cover in Spheroidal Cast Iron.

Frame in Steel Hot-Dip Galvanized mechanically welded for a better flexibility.

1000
OR
1200

2, 3, 4,...,12, ...
rectangular covers
– no limits



TITAN

1000 & 1200



AUTOMATIC BURGLAR-PROOF LOCK « PUSHED / SLAMMED »

Outside :

- Burglar-proof opening resistance 20 min (certified).
- No possible access to the lock when lids are closed.

Inside :

- Ductile iron system with stainless steel hardware for a better resistance against aggressive atmospheres (H₂S).
- Through hole.

Reliability :

- Automatic closing « Pushed & Slammed ».
- Ergonomic key not removable when engaged (used as a handle).



TITAN

1000 & 1200



SAFETY

At the opening, safety blocking device (gravity pawl) automatically locks the cover and prevents the cover from being accidentally closed.

Easy closing & effortless by only rising the device.



TITAN

1000 & 1200



WATERTIGHTNESS (option)

- Odourtight.
- 100% runoff watertightness third party certified with TÜV.

Runoff watertightness is obtained by addition of movable watertight beam between each lid and 6 stainless steel compression bolts per cover.



TÜV SÜD Industrie Service GmbH
Westendstrasse 196
80696 Munich - Germany
Telefon: +49 89 5791 2672 / Telefax: +49 89 5791 1291
www.tuev-sued.de/is



Abnahmeprüfzeugnis Inspection Test Certificate Certificat de réception

DIN / BS / NF
EN 10204 – 3.2

Über die Prüfung von Produkte / For testing of products / Pour le contrôle de produits.

Besteller / Customer / Acheteur :

SOVAL,
Rue de l'Usine, 52130 Brousseval – France.

Hersteller / Manufacturer / Fabricant :

FBM
Fonderies de Brousseval et Montreuil
Rue de l'Usine, 52130 Brousseval – France.

Prüf-Nr. / Insp. No. / Certificat n° :
P-F-21-12-FBM-727014126_TITAN1200
Bestell-Nr. / Order No. / N° de Cde :
227002199/JCG
Vom / Dated / Date :
17.02.2020
Blatt Nr. / Sheet No. / Page n° :
1/1

Prüfungslagen-Anforderungen / Technical requirements-Demand / Spécifications techniques-Exigences :

Essais étanchéité Trappe TITAN 1200 (400KN) sous 25 cm d'eau.
Leak test on manhole TITAN 1200 (400KN) under 25 cm of water.

Gegenstand und Werkstoffqualitäten / Article designation and Qualities / Désignation du produit et qualités :

(95204A)-Ensemble Trappe rectangulaire TITAN_2 (1200) 400KN / Cadre acier S235JR.
(95204A)-Assembly manhole covers Types TITAN_2 (1200) 400KN / Steel frame S235JR.

TITAN

1000 & 1200



FALL SAFETY EQUIPMENT (option)

Fall safety equipment, made in Stainless Steel Low Carbon (pickling + passivation) offering high resistance to aggressive atmospheres.

Directly fixed on the frame : Grid Railing – Solidary Bars – Independent Bars.



TITAN

1000 & 1200



APPLICATIONS – WET NETWORKS

Waste Water Treatment Plants & Sewage treatment

Public or Private operators which are managing centralized Wastewater Treatment Plants.

Mainly for pumps, valves, worm gear, mechanical screens, drawpits, ...

Main features searched :

- Lift assistance in Stainless Steel (H2S) : SS Gas Struts or SS Mechanical Springs.
- Accessories and hardwares in Stainless Steel.
- Special coating on frame and/or covers as high-performance corrosion protection (alternative to stainless steel access cover).
- Odourtight.
- Runoff watertightness.



TITAN

1000 & 1200



APPLICATIONS – WET NETWORKS

Industrial Waste Water Treatment Plants

Private operators which are managing Industrial Wastewater Treatment Plants to reduce the impact of using intake water from the clean water network and to minimise any subsequent discharge.

Mainly for pumps, valves, worm gear, mechanical screens, drawpits, ...

Main features searched :

- Lift assistance in Stainless Steel (H2S) : SS Gas Struts or SS Mechanical Springs.
- Accessories and hardwares in Stainless Steel.
- Special coating on frame and/or covers as high-performance corrosion protection (alternative to stainless steel access cover).
- Odourtight.
- Runoff watertightness.



TITAN

1000 & 1200



APPLICATIONS – WET NETWORKS

Utility – Clean Water Supply

Public or Private operators which are managing treatment (chlorination), storage and distribution of drinking clean water.

Mainly for pumps, valves, flow meters, ...

Main features searched :

- Lift assistance in Stainless Steel : SS Gas Struts or SS Mechanical Springs.
- Accessories and hardwares in Stainless Steel.
- Runoff watertightness.



TITAN

1000 & 1200



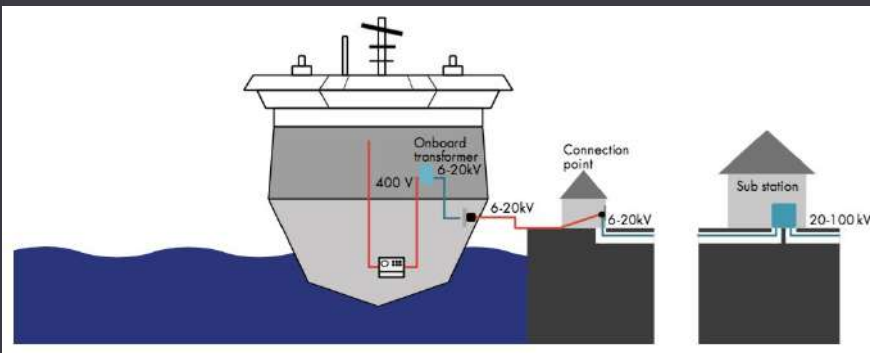
APPLICATIONS – WET NETWORKS

Industrial Ports

Mainly for pumps, valves, shore power, ...

Main features searched :

- E600 for industrial areas.
- Lift assistance in Stainless Steel : SS Gas Struts or SS Mechanical Springs.
- Accessories and hardware in Stainless Steel.
- Runoff watertightness.



TITAN

1000 & 1200



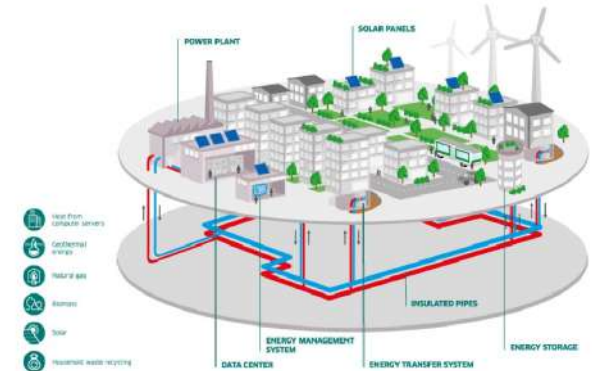
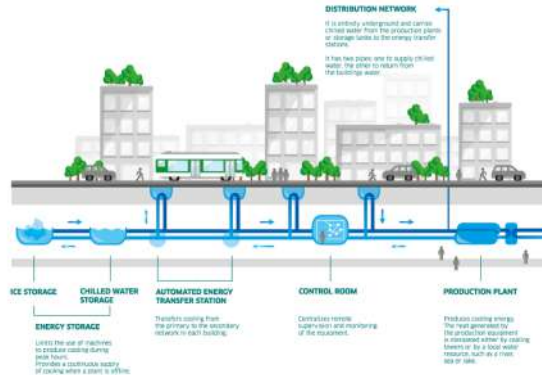
APPLICATIONS – DRY NETWORKS

Industry – District Heating (heat networks), Cooling Systems, Power Plants

Mainly for cooling water pump, heat pumps, valves, heat exchanger substations, ...

Main features searched :

- Lift assistance in Stainless Steel : SS Gas Struts or SS Mechanical Springs.
- Accessories and hardwares in Stainless Steel.
- Runoff watertightness.
- Burglar-proof lock.



TITAN

1000 & 1200



APPLICATIONS – DRY NETWORKS

Utility – Electricity, Gas

Electricity and gas distribution networks

Mainly for power transformer, electrical substation, electric generator, cable management, gas shutoff valve, duct access chambers, ...

Main features searched :

- Lift assistance in Steel Gas Struts.
- Runoff watertightness.
- Burglar-proof lock.



TITAN

1000 & 1200



APPLICATIONS – DRY NETWORKS

Mobility

Tram, Metro

Mainly for electrical substation, management of signaling system, traffic signal pits, cable management, ...

Main features searched :

- Lift assistance in Steel Gas Struts.
- Runoff watertightness.
- Burglar-proof lock.



TITAN

1000 & 1200



APPLICATIONS – DRY NETWORKS

Datacenters

Mainly for fire protection network, data storage, cooling systems, electric generator, cable management, CCTV chambers & cable pits, ...

Main features searched :

- Lift assistance in Steel Gas Struts.
- Runoff watertightness.
- Burglar-proof lock.



TITAN EVOLUTION 1000 & 1200

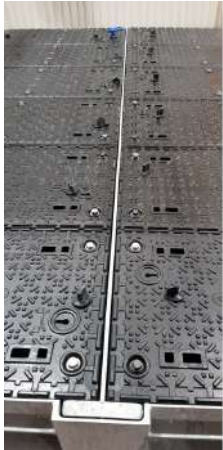


EXAMPLES – RANGE EVOLUTION WITH REMOVABLE BEAM



TITAN EVOLUTION

1000 & 1200



EXAMPLES – RANGE EVOLUTION WITH REMOVABLE BEAM



TITAN EVOLUTION 1000 & 1200



EXAMPLES – RANGE EVOLUTION WITH REMOVABLE BEAM





BERGTEC
INTERNATIONAL

ENVIRONMENT TREATMENT PROTECTION
BERGTEC International AG

Altegghalde, 5

CH-6045 MEGGEN

(Switzerland)

www.bergtecinternational.ch

Tel : +41/61.228.76.07

info@bergtec.ch

